

MITCHELL-INNES & NASH

ART BASEL | BASEL

Hall 2.0, Stand G6

June 15 – 18, 2017

Parcours & Unlimited | June 12

First Choice | June 13

Preview | June 14

Offers subject to prior sale



JEAN ARP
Fruit Prédamite
1962
Bronze, one from an edition of
three
22 7/8 by 16 1/2 by 18 1/2 in. 58
by 42 by 47 cm.
MI&N 13469



JEAN ARP
Ptolemy I
1953
Bronze, ed. 2/3
39 1/2 by 20 by 17 in. 100.3 by
50.8 by 43.2 cm.
MI&N 14119



MONICA BONVICINI
Galveston Hurricane, 1900
2016
Tempera and spray paint on
fabriano paper
78 3/4 by 59 in. 200 by 150 cm.
MI&N 13818



ALEXANDER CALDER
Skating Bear
1927
Painted wood
Length: 12 in. 30.5 cm.
MI&N 13275



ANTHONY CARO
Orpheus
2008-09
Painted steel
78 by 77 by 44 in. 198 by 195.5
by 112 cm.
MI&N 8813



JAY DeFEO
Untitled
1973
Cut gelatin silver print
3 1/2 by 4 in. 8.9 by 10.2 cm.
MI&N 14112



JAY DeFEO
White Water
1989
Oil on linen
16 1/8 by 12 in. 41 by 30.5 cm.
MI&N 12379



MAX ERNST
Les elements, ma belle, refletent l'eclat de vos yeux
1962
Oil on canvas
45 11/16 by 35 in. 116 by 88.9 cm.
MI&N 13643



KELTIE FERRIS
The Science of Flowers
2016
Oil and acrylic on canvas
72 by 60 in. 182.9 by 152.4 cm.
MI&N 13674



KELTIE FERRIS

Superheroes

2017

Oil and powdered pigment on paper

41 3/8 by 59 7/8 in. 105.1 by 152.1 cm.

MI&N 14116



KARL HAENDEL
Minus Chardin #3
2017
Pencil on paper
30 1/8 by 22 5/8 in. 76.5 by 57.5 cm.
MI&N 14117



WASSILY KANDINSKY

Scharf

1928

Watercolor and gouache on paper laid
down on black card

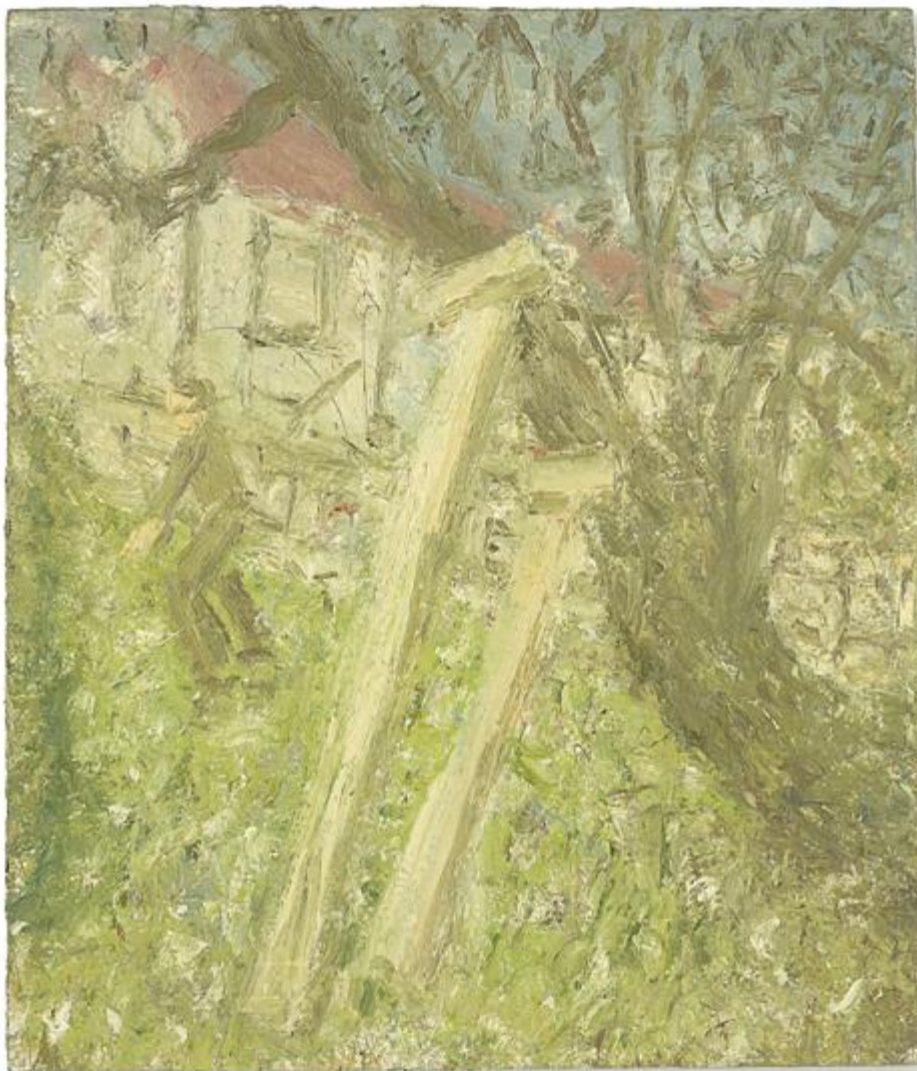
Signed with the initials and dated *k/28*

lower left; inscribed in the artist's hand

No 253/1928 scharf on the reverse

19 5/8 by 13 1/8 in. 49.8 by 33.3 cm.

MI&N 14123



LEON KOSSOFF
Cherry Tree, Early January
2004
Oil on board
56 by 48 1/4 in. 142.5 by 122.5 cm.
MI&N 9204



MALCOLM MORLEY

Aegean Crime

1987

Oil and wax on canvas

78 by 138 5/8 in. 198.1 by 352.1 cm.

MI&N 10671



KENNETH NOLAND

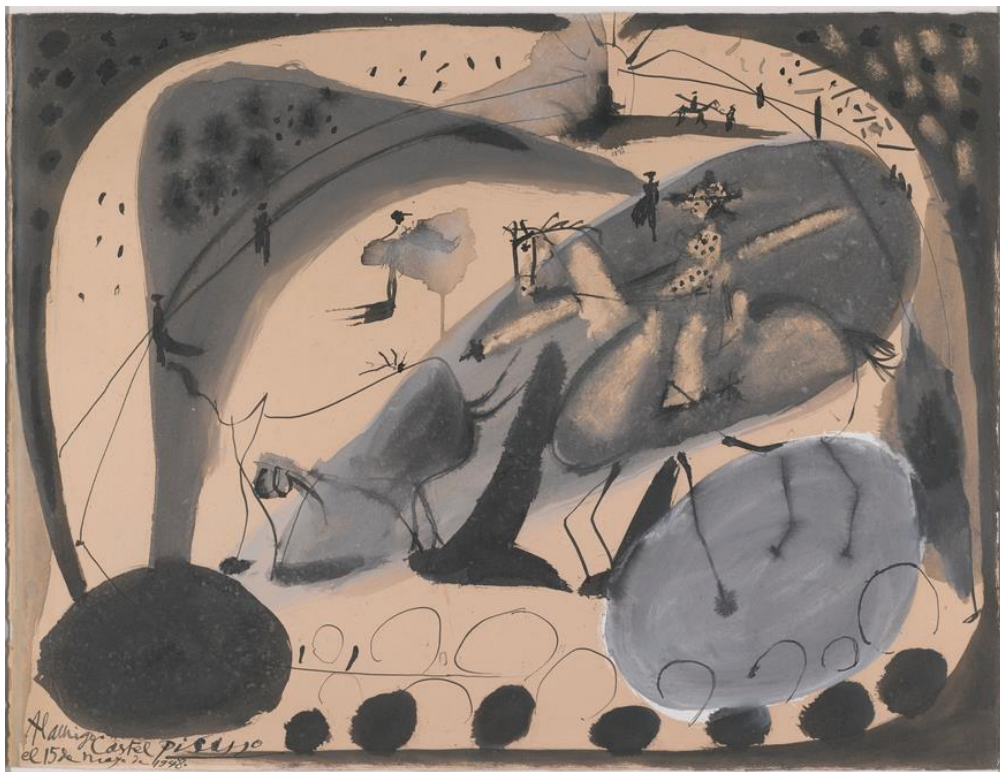
Across

1964

Acrylic on canvas

95 3/4 by 115 7/8 in. 243.2 by 294.3 cm.

MI&N 14118



PABLO PICASSO

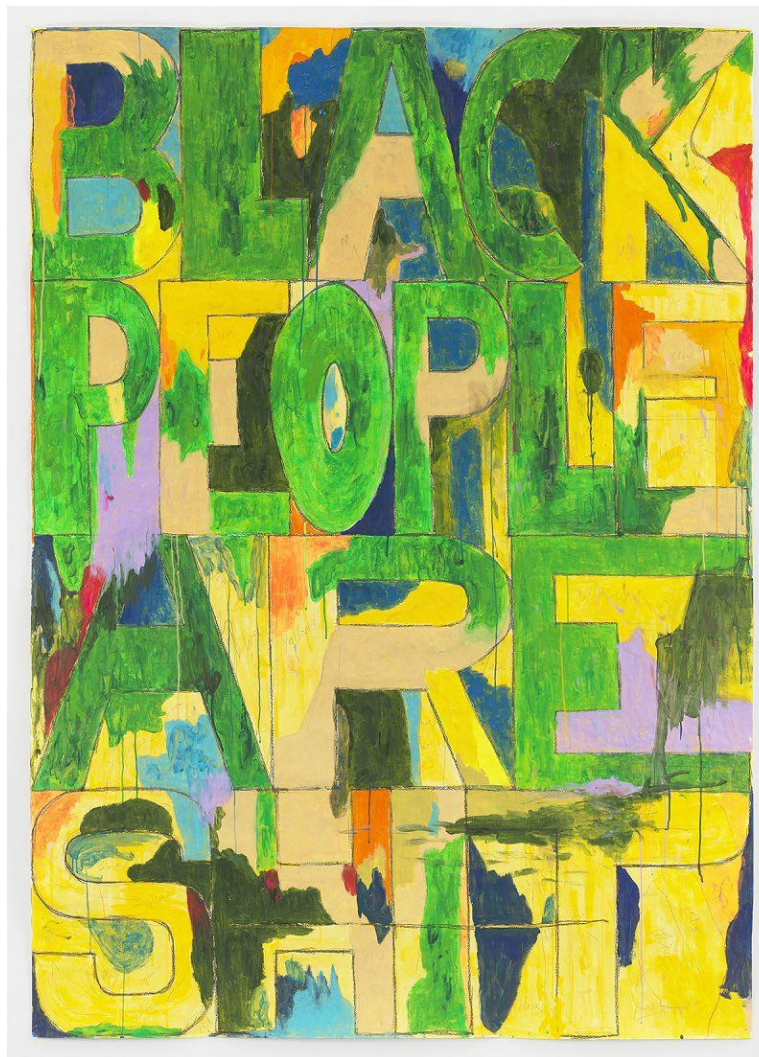
Course de taureaux (Bull fight)

1948

Ink, ink wash and gouache on
paper

20 by 25 5/8 in. 51 by 65 cm.

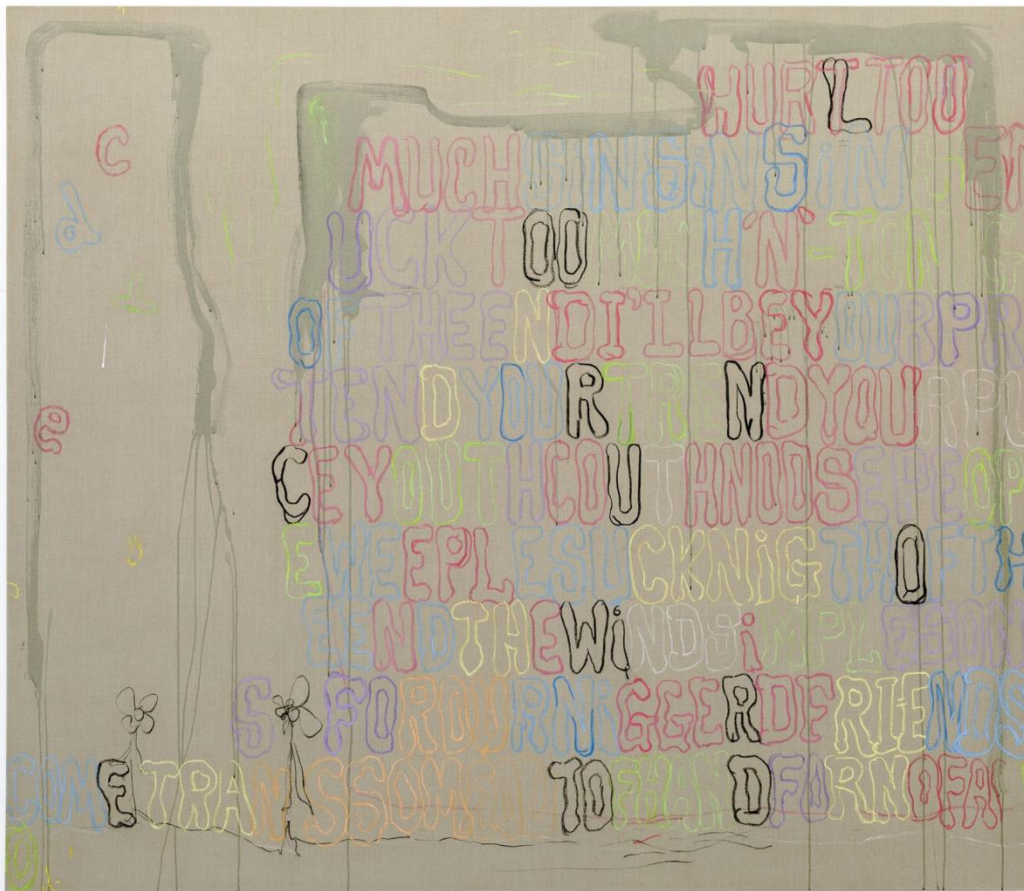
MI&N 14122



POPE.L
Black People Are Shit
2012
Acrylic, china marker, oil stick,
pencil and water-based oil paint on
paper
84 by 60 in. 213.4 by 152.4 cm.
MI&N 13220



POPE.L
Unto
2016
Acrylic, ballpoint pen, cellophane tape, charcoal, coffee, door hinges, hospital bandages, hospital bracelet, matte medium, ninja turtle band aid, and oil on canvas
72 by 64 in. 182.9 by 162.6 cm.
MI&N 13525



POPE.L
I'll Be Your Pretend
 2016-2017
 Acrylic, chalk, charcoal, graphite
 and tape on linen
 72 by 84 by 3 in. 182.9 by 213.4
 by 7.6 cm.
 MI&N 13857



MARTHA ROSLER

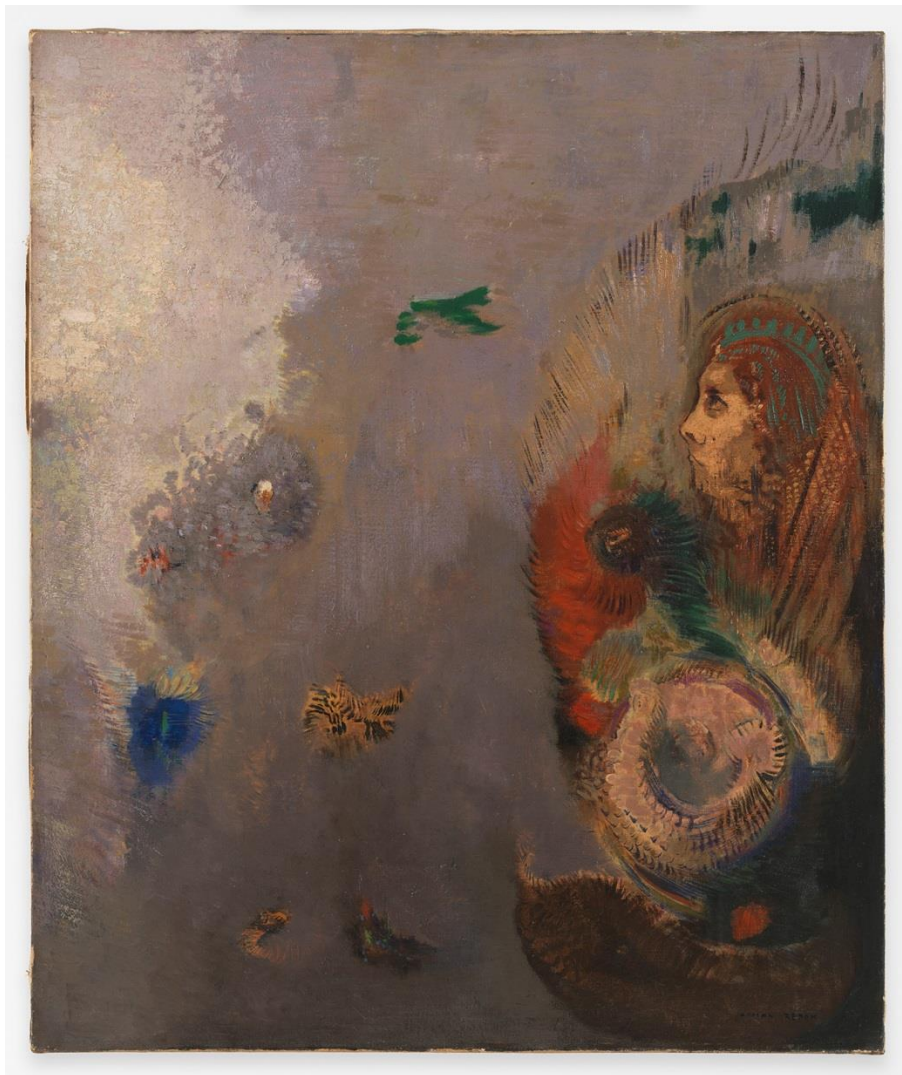
Point and Shoot

2008

Photomontage, ed. 3/10 plus 2 AP

30 by 40 in. 76.2 by 101.6 cm.

MI&N 13109



ODILON REDON

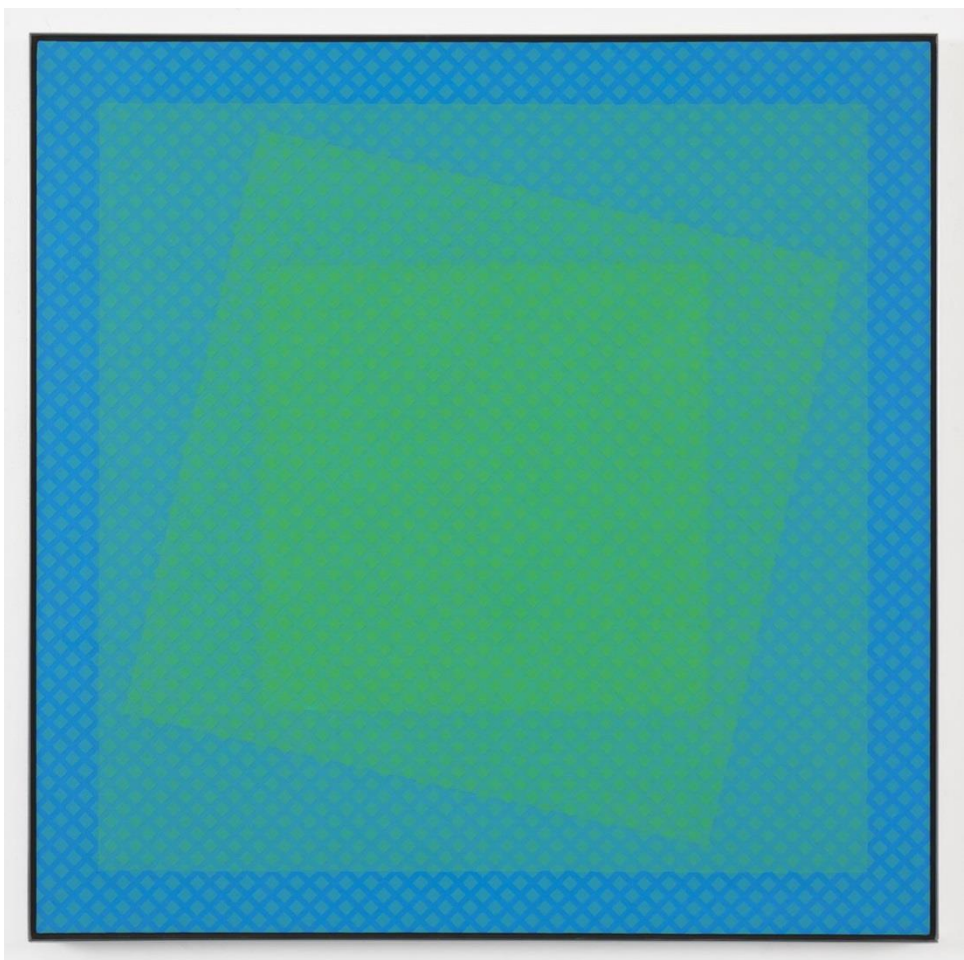
Le Reve (Oannes)

Circa 1904

Oil on canvas

25 5/8 by 21 3/8 in. 65.1 by 54.3 cm.

MI&N 14121



JULIAN STANCZAK
Soft Light
1972
Acrylic on canvas
36 by 36 in. 91.4 by 91.4 cm.
MI&N 13925



TOM WESSELMANN
Sunset Nude with Wesselmann Still Life
2004
Oil on canvas
56 3/8 by 77 15/16 in. 142.6 by 198.1 cm.
MI&N 13726



FRANZ WEST

Karton Silber

1984

Cardboard with applied gesso and silver color

21 1/4 by 41 3/8 by 1 5/8 in. 54 by 105 by 4 cm.

MI&N 6564

MITCHELL-INNES & NASH

ART BASEL | BASEL

June 15 – 18, 2017

Messe Basel | Hall 2.0, Stand G6

Messeplatz 10 | 4005 Basel

Mitchell-Innes & Nash is also pleased to present two projects in Parcours during Art Basel in Basel:

GCC

Belief in the Power of Believe, 2017

Naturhistorisches Museum Basel

Augustinergasse 2, 4051 Basel

Please click [here](#), for more information

AMANDA ROSS-HO

Untitled Findings (ACCESS), 2017

Located throughout the city of Basel

Please click [here](#), for more information

MITCHELL-INNES & NASH

534 West 26th Street, New York, NY 10001

1018 Madison Ave, New York, NY 10075

T +1 212 744 7400 | www.miandn.com

On-Site Contacts:

Robert Grosman | robert@miandn.com

Bridget Finn | bridget@miandn.com

Josephine Nash | josie@miandn.com

**Offers subject to prior sale*