

MITCHELL-INNES & NASH SEASONAL SPACE IN MIAMI

November 27, 2020 – January 4, 2021

Opening Preview Week: Friday, November 27 – Sunday, December 6, 2020

119 NE 41st St, Miami, FL, between NE 1st Ave and Paseo Ponti



New York, November 12, 2020 – Mitchell-Innes & Nash is pleased to announce a new temporary exhibition space in Miami, Florida, opening November 27th and continuing through January 2021 where we will be presenting a series of exhibitions featuring new and historic work by gallery artists. The inaugural show will be a four-person exhibition with work by **Gerasimos Floratos, Eddie Martinez, Pope.L** and **Brent Wadden**. Additionally, we will have works on view in our second-floor viewing room by

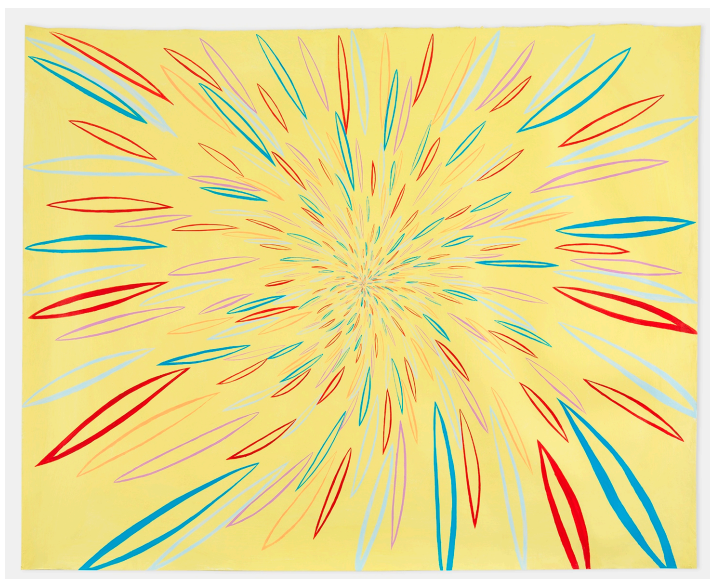
Sadie Benning, Monica Bonvicini, Sarah Braman, Keltie Ferris, General Idea, Nancy Graves, Karl Haendel, Chris Johanson, Annette Lemieux, Jacolby Satterwhite, Julian Stanczak and Paul Winstanley.

Mitchell-Innes & Nash will be situated within the Miami Design District, just down the street from the Institute of Contemporary Art Miami and the de la Cruz Collection. Exhibitions will be free and open to the public, with opening hours from Wednesday to Saturday, noon to 7 pm, on Sundays from noon to 5 pm and by appointment. To make an appointment, please email Gabriel Kilongo (gabriel@miandn.com). Mitchell-Innes & Nash will follow local safety guidelines to protect visitors against the spread of COVID-19, including requirements for social distancing, face masks, limited capacity and frequent disinfecting.

Lucy Mitchell-Innes comments: “We are excited to return to Miami this winter as we have done since the inaugural year of Art Basel Miami Beach, and to engage with the vibrant arts community, curators and artists and collectors – all of whom have told us how eager they are to view art in a gallery setting as opposed to virtual viewing rooms.”

About Mitchell-Innes & Nash

Founded by Lucy Mitchell-Innes and David Nash, Mitchell-Innes & Nash places exemplary contemporary artists within a historical context, revealing a continuity of ideas and aesthetic virtuosity from the Modern era through



MITCHELL-INNES & NASH

the present day.



Mitchell-Innes & Nash's renowned exhibition program, in both their Madison Avenue and Chelsea locations, fosters excellence within artistic practice, while forging an informed dialogue between emerging and internationally recognized artists. From acclaimed surveys of 20th-century masters, such as Jean Arp, Anthony Caro, Jay DeFeo, Willem de Kooning, Leon Kossoff, Kenneth Noland, Roy Lichtenstein, and Nicolas de Stael, to solo exhibitions of Pope.L, Martha Rosler, and Jessica Stockholder, Mitchell-Innes & Nash has proven expertise in both advancing the careers of emerging artists and maintaining the superior standard set by established artists.

Captions (from top to bottom):

POPE.L, *Unca Levert*, 1998, mixed media installation / © Pope.L

CHRIS JOHANSON, *Energy Burst (Yellow)*, 2018, acrylic and house paint on paper / © Chris Johanson

GENERAL IDEA, *Great AIDS (Pyrolle Orange)*, 1990/2019, acrylic on linen / © General Idea

KARL HAENDEL, *Lion 10*, 2020, pencil and ink on paper / © Karl Haendel

All images courtesy of the artist and Mitchell-Innes & Nash, New York

Listings Information:

Mitchell-Innes & Nash is located at 534 West 26th Street in New York, NY and at 119 NE 41st St in Miami, FL

Tel: 212 744 7400. |

Web: www.miandn.com

