



MITCHELL-INNES & NASH

ART BASEL MIAMI BEACH
NOVEMBER 30 - DECEMBER
4, 2021 BOOTH F5

**Offers subject to prior sale*

MITCHELL-INNES & NASH

Mitchell-Innes & Nash is pleased to present a selection of new works by gallery artists **Gideon Appah, Keltie Ferris, Gerasimos Floratos, Karl Haendel, Chris Johanson, Eddie Martinez, Pope.L** and **Jacolby Satterwhite** alongside historic work from the estates of **Alberto Burri, Kiki Kogelnik, Henry Moore** and **Julian Stanczak**.

The gallery will also be presenting work for the first time by American artist, filmmaker and curator **Tiona Nekkia McClodden**, Brazilian painter **Antonio Henrique Amaral** and Paraguayan artist **Feliciano Centurión**.

Antonio Henrique Amaral (1933–2015) is a key figure in Brazil and Latin America. His visceral and allegorical works deal with political violence, existential discontent and erotic desire through an experimental approach that challenges authoritarianism. The works on view are from his “As Bocas” (“The Mouths”) series, made in the mid-1960s in response to Brazil’s coup d’état of 1964 and the generally repressive political climate seen throughout Latin America during this time.

Tiona Nekkia McClodden (b. 1981) is a visual artist, filmmaker, and curator whose work explores and critiques issues at the intersections of race, gender, sexuality, and social commentary. On view will be works from McClodden’s “CLUB,” a body of work presented at Performance Space New York in 2018 that paid homage to her early beginnings as a filmmaker on the punk, lesbian club scene.

Feliciano Centurión (1962-1996) was born in southern Paraguay and lived and worked in Buenos Aires with great success until his death at the age of 34 from AIDS-related complications. Using chintzy synthetic frazadas, or blankets, bought at the outdoor markets of Buenos Aires, Centurion painted animals from his native Paranaese country in a style that nods to the fraught colonial history of the region. These paintings and his other textile works mix queer aesthetics with the folk and textile traditions of his indigenous Guaraní culture to poignant and dramatic effect.

MITCHELL-INNES & NASH



ANTONIO HENRIQUE AMARAL

O discurso ou El tirano

1966

Oil on canvas

51 1/8 by 63 in. 130 by 160 cm.

(MI&N 17462)



MITCHELL-INNES & NASH



ANTONIO HENRIQUE AMARAL

Sexus

1966

Oil on eucatex

47 1/4 by 35 3/8 in. 120 by 90 cm.

(MI&N 17463)

MITCHELL-INNES & NASH



ANTONIO HENRIQUE AMARAL

Pop Coroa

1966

Oil on canvas

51 1/8 by 63 in. 130 by 160 cm.

(MI&N 17464)

MITCHELL-INNES & NASH



GIDEON APPAH

Two Men Having a Smoke

2020-2021

Oil and acrylic on canvas

78 by 78 in. 198.1 by 198.1 cm.

(MI&N 17141)



MITCHELL-INNES & NASH



GIDEON APPAH

Flower Feet

2019

Charcoal on paper

16 1/2 by 11 5/8 in. 41.9 by 29.5 cm.

(MI&N 17247)

MITCHELL-INNES & NASH



GIDEON APPAH

Lying Down

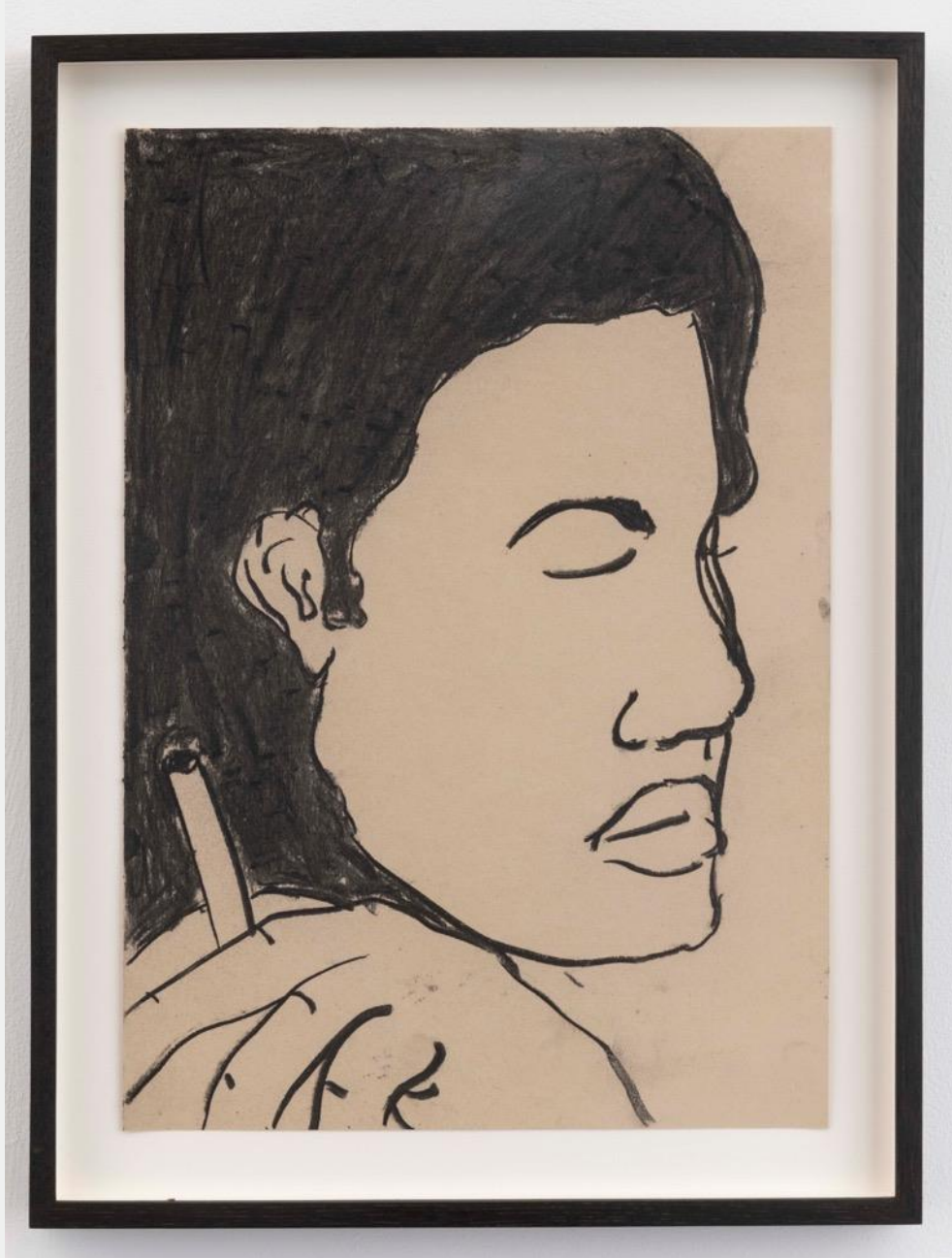
2019

Charcoal on paper

16 1/2 by 11 5/8 in. 41.9 by 29.5 cm.

(MI&N 17259)

MITCHELL-INNES & NASH



GIDEON APPAH

High II

2019

Charcoal on paper

16 1/2 by 11 5/8 in. 41.9 by 29.5 cm.

(MI&N 17261)

MITCHELL-INNES & NASH



SADIE BENNING

Blow Up 3

2017

Wood, aqua resin, casein and acrylic gouache

79 by 54 in. 200.7 by 137.2 cm.

(MI&N 16603)

MITCHELL-INNES & NASH



SADIE BENNING

Blow Up 4

2017

Wood, aqua resin, casein and acrylic gouache

72 by 54 in. 182.9 by 137.2 cm.

(MI&N 17361)

MITCHELL-INNES & NASH



SARAH BRAMAN

Cooking (for Phil)

2021

Maple log, glass, silicone and pan

33 by 21 by 26 in. 83.8 by 53.3 by 66 cm.

(MI&N 17542)



MITCHELL-INNES & NASH



SARAH BRAMAN

Sit

2021

Oak and Maple, dye, paint and shellac

26 by 28 by 28 in. 66 by 71.1 by 71.1 cm.

(MI&N 17541)

MITCHELL-INNES & NASH



ALBERTO BURRI

Combustione

1961

Paper collage, combustione, gouache and vinavil on card

18 1/4 by 24 3/8 in. 46.4 by 61.9 cm.

(MI&N 16980)

MITCHELL-INNES & NASH



FELICIANO CENTURIÓN

Cuatro tigres adolescentes (Four Adolescent Tigers)

1993

Acrylic on blanket

72 1/2 by 80 in. 184.2 by 203.2 cm.

(MI&N 17406)

MITCHELL-INNES & NASH



FELICIANO CENTURIÓN

Untitled

c. 1993

Acrylic on textile on wooden stretcher

19 3/4 by 21 in. 50.2 by 53.3 cm.

(MI&N 17408)

MITCHELL-INNES & NASH



CARROLL DUNHAM

Untitled

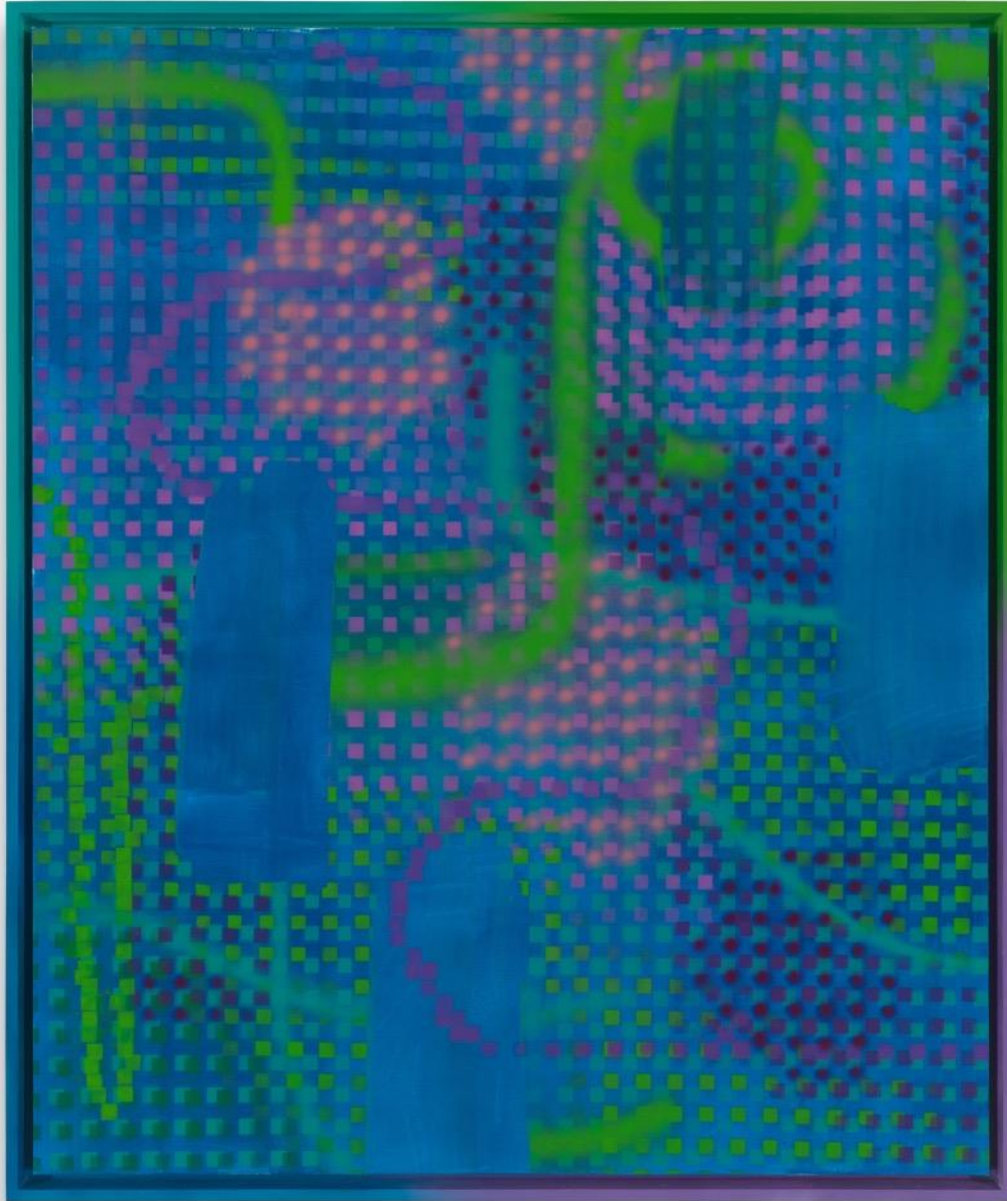
2010

Graphite and watercolor with monotyping

32 1/2 by 25 1/8 in. 82.6 by 63.8 cm.

(MI&N 9144)

MITCHELL-INNES & NASH



KELTIE FERRIS

Water Lilies

2020-2021

Oil on canvas in the artist's frame

Canvas: 72 by 60 in. 182.9 by 152.4 cm.

Framed: 75 by 63 by 3 in. 190.5 by 160 by 7.6 cm.

(MI&N 16965)

MITCHELL-INNES & NASH



GERASIMOS FLORATOS

Untitled

2021

Oil and collage on canvas

72 by 72 in. 182.9 by 182.9 cm.

(MI&N 17540)

MITCHELL-INNES & NASH



SAM FRANCIS

Untitled (Blue, Yellow, White)

Circa 1956

Watercolor and gouache on paper laid down on canvas

30 by 22 1/8 in. 76 by 56.2 cm.

(MI&N 17041)



MITCHELL-INNES & NASH



KARL HAENDEL

Not Titled (Streisand)

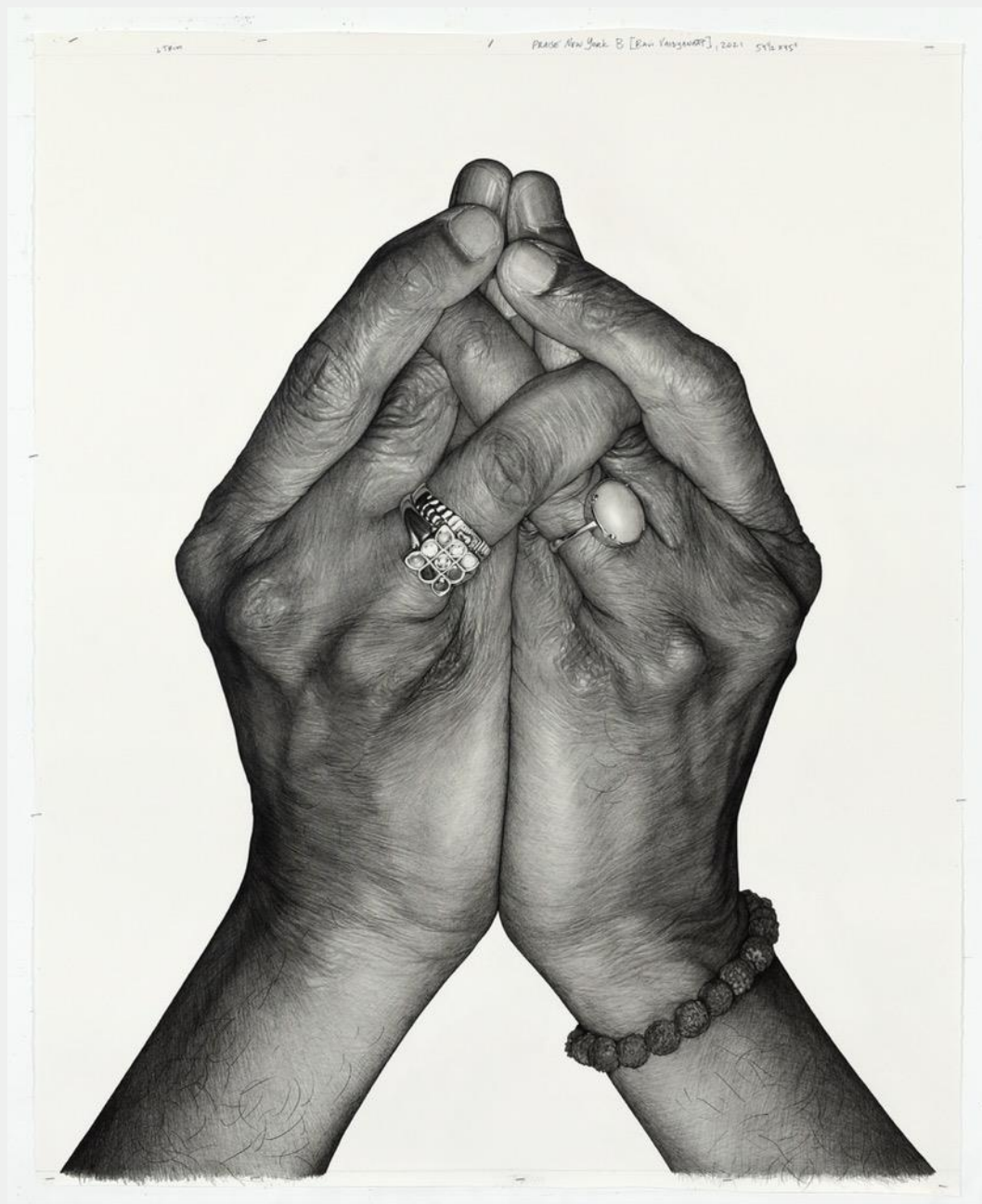
2020

Pencil on folded paper

70 1/2 by 51 1/2 in. 179.1 by 130.8 cm.

(MI&N 17318)

MITCHELL-INNES & NASH



KARL HAENDEL

Praise New York B (Ravi Vaidyanaat Śivāchāriar)

2021

Pencil on paper

54 1/2 by 45 in. 138.4 by 114.3 cm.

(MI&N 17357)

MITCHELL-INNES & NASH



KARL HAENDEL

Praise New York F (Rabbi Rachel Timoner)

2021

Pencil on paper

55 by 45 in. 139.7 by 114.3 cm.

(MI&N 17358)

MITCHELL-INNES & NASH



CHRIS JOHANSON

Unknow Know With What Is 2

2019-2021

Acrylic and house paint on the artist's great grandmother's table cloth

16 1/2 by 27 3/4 in. 41.9 by 70.5 cm.

(MI&N 17320)

MITCHELL-INNES & NASH



CHRIS JOHANSON

Unknow Know With What Is 3

2019-2021

Acrylic and house paint on pillowcase

17 1/2 by 26 7/8 in. 44.5 by 68.3 cm.

(MI&N 17321)

MITCHELL-INNES & NASH



PAUL KLEE

Bildnis einer Veilchenaugigen (Portrait of a Violet-Eyed Woman)

1921

Watercolor, brush and ink over pencil on paper laid down on tissue, laid down on the artist's mount

image size: 8 3/4 by 7 1/2 in. 22.1 by 19 cm.

artist's mount: 13 by 9 7/8 in. 33 by 25 cm.

(MI&N 17275)

MITCHELL-INNES & NASH



KIKI KOGELNIK

Untitled (Pink Bomb)

c. 1964

Oil and acrylic on canvas

20 by 26 1/4 by 3/4 in. 50.8 by 66.7 by 1.9 cm.

(MI&N 17172)

MITCHELL-INNES & NASH



KIKI KOGELNIK

Marriage Ring

1964

Oil and acrylic on canvas

7 by 7 in. 17.8 by 17.8 cm.

(MI&N 17173)

MITCHELL-INNES & NASH



ANNETTE LEMIEUX

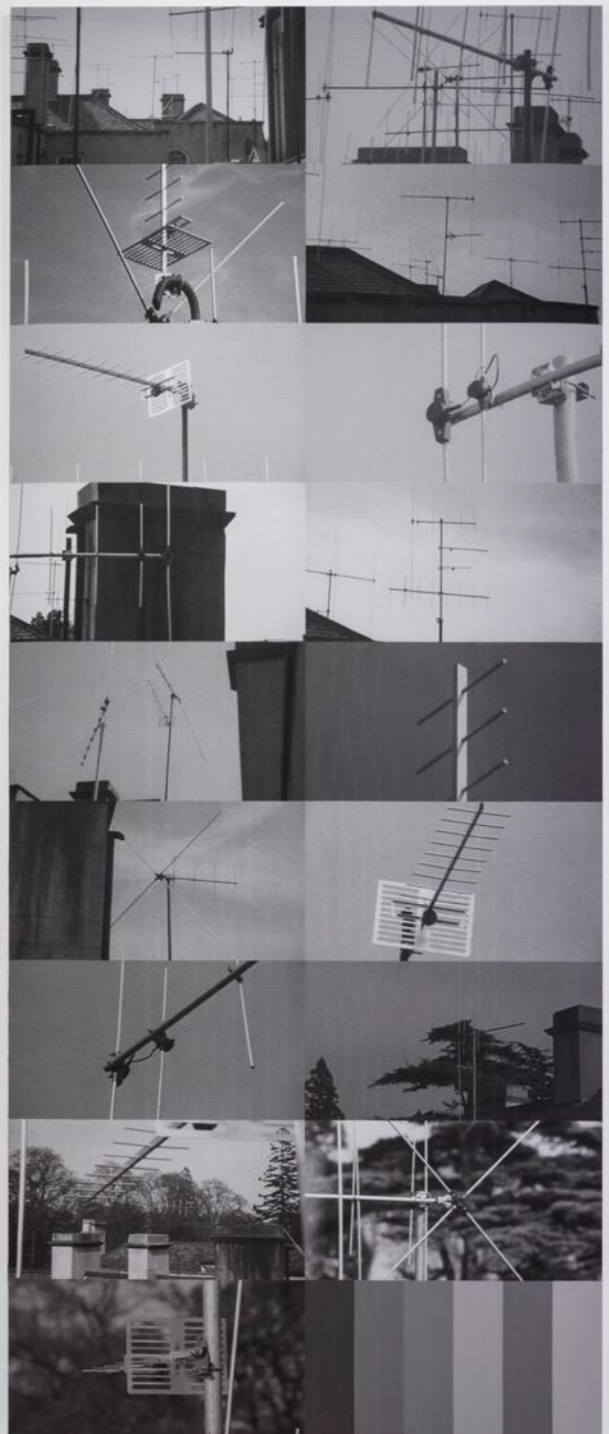
The Watchers

2017

Pigment inkjet on cotton

Diptych, each panel: 126 by 52 in. 320 by 132.1 cm.

(MI&N 15347)



MITCHELL-INNES & NASH



HENRY MOORE

Women Winding Wool

1949

Crayon, watercolor, pencil, chalk and gouache on paper

13 3/4 by 25 in. 34.8 by 63.6 cm.

(MI&N 16739)

MITCHELL-INNES & NASH



POPE.L

Bind or Righteousnes

2021

Charcoal, acrylic, oil, pastel, wood putty, glitter glue, and framing hammer on panel

60 by 48 by 2 in. 152.4 by 121.9 by 5.1 cm.

(MI&N 17177)



MITCHELL-INNES & NASH



JACOLBY SATTERWHITE

Winner Room

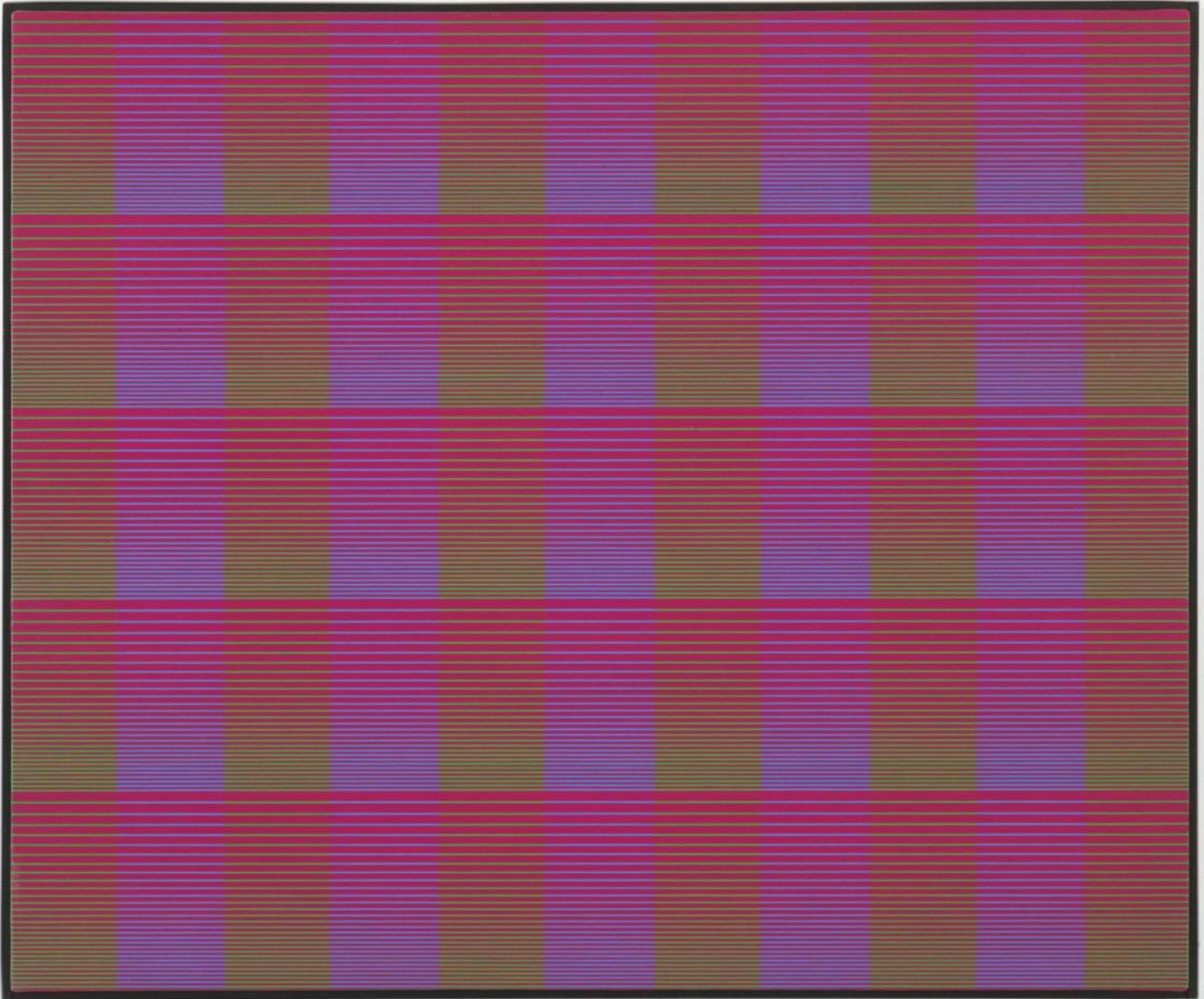
2019

UV pigment on aluminum, ed. 1/2 plus 1 AP

47 by 80 in. 119.4 by 203.2 cm.

(MI&N 16114)

MITCHELL-INNES & NASH



JULIAN STANCZAK

Five Verticals

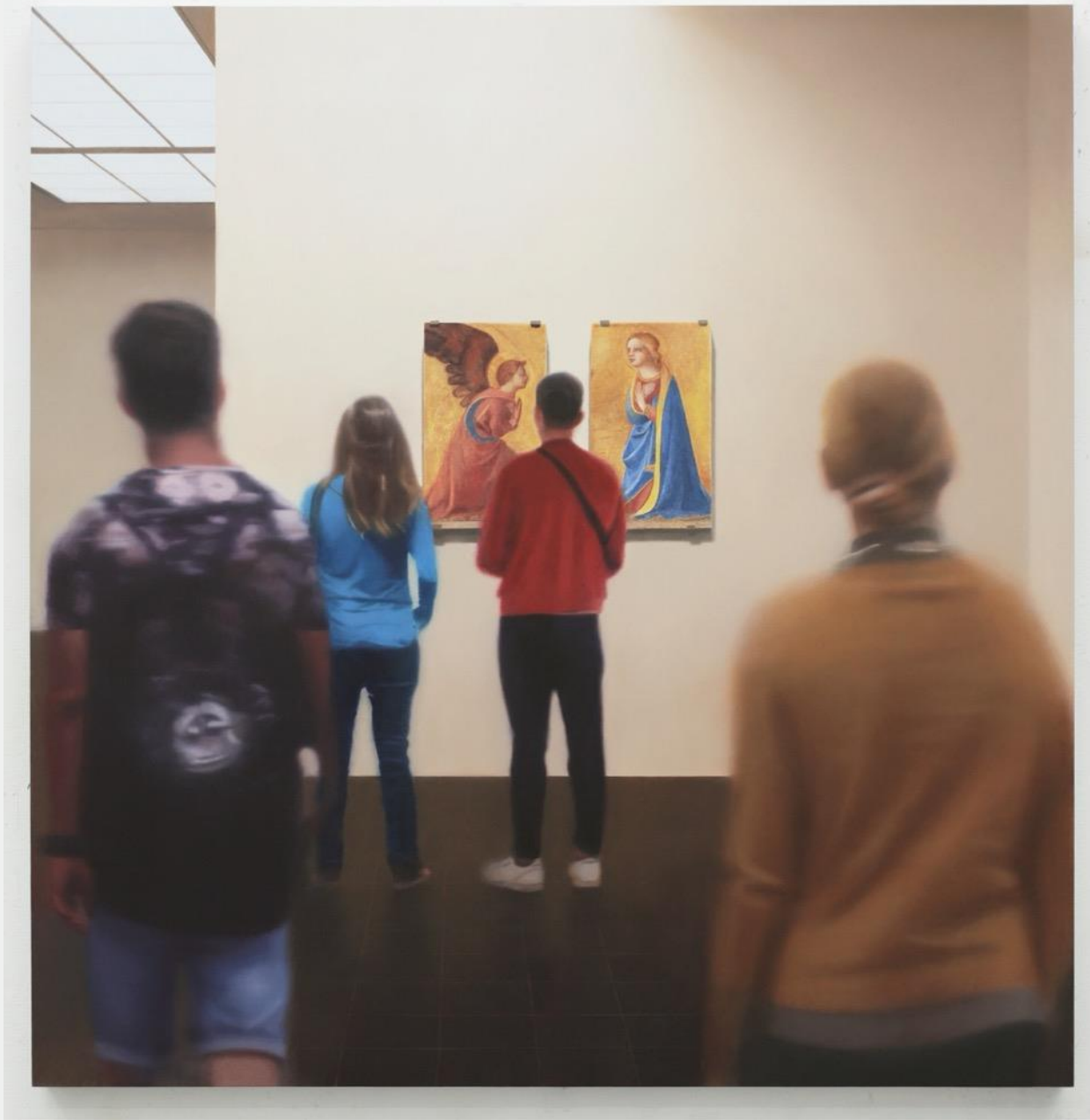
1970-71

Acrylic on canvas

34 by 38 in. 86.4 by 96.5 cm.

(MI&N 13921)

MITCHELL-INNES & NASH



PAUL WINSTANLEY

Apostasy (The Weight)

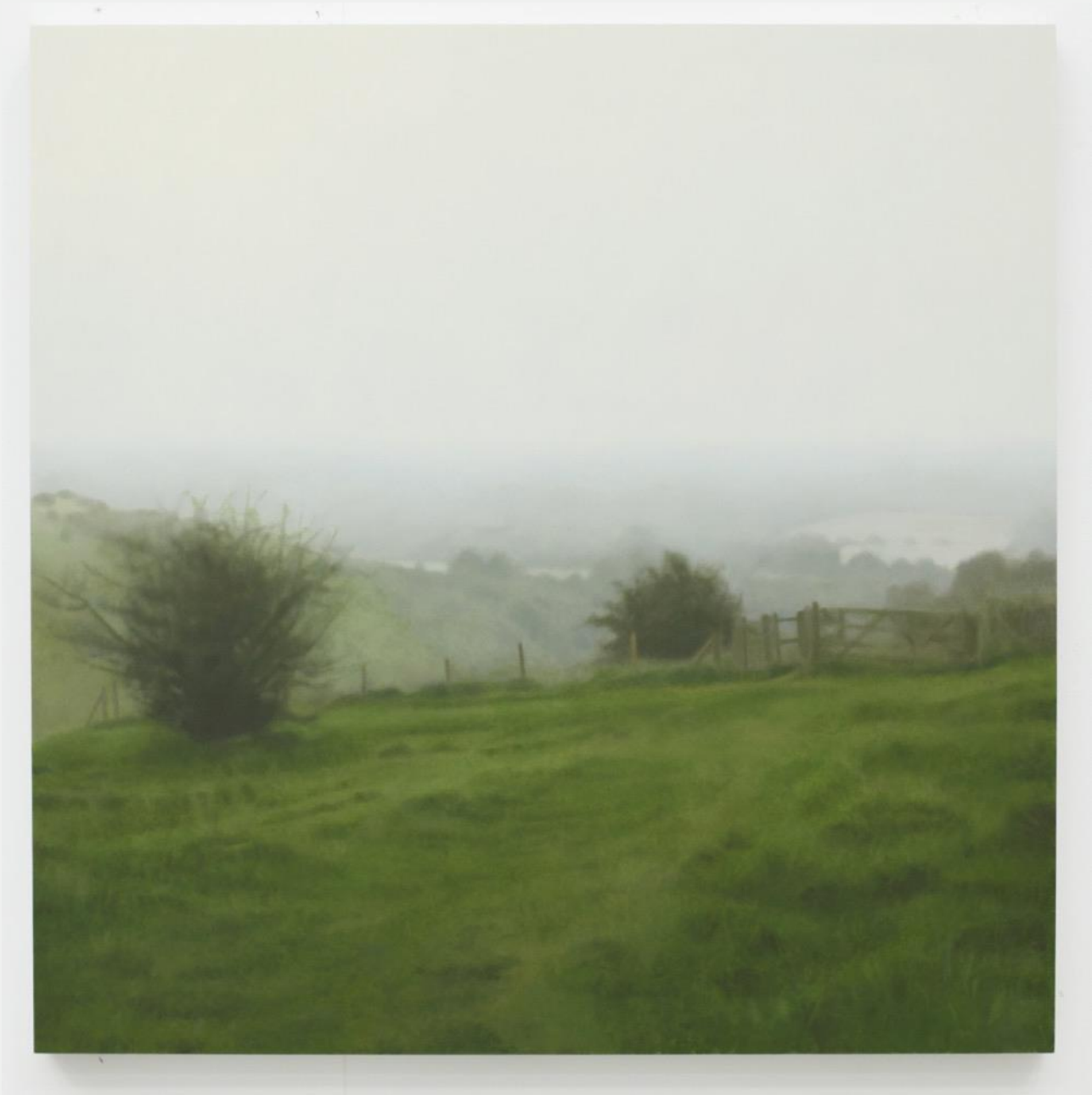
2021

Oil on gesso panel

34 5/8 by 33 1/16 in. 88 by 84 cm.

(MI&N 17353)

MITCHELL-INNES & NASH



PAUL WINSTANLEY

Edge 2

2021

Oil on gesso panel

28 3/8 by 28 3/8 in. 72 by 72 cm.

(MI&N 17355)

MITCHELL-INNES & NASH



PAUL WINSTANLEY

Edge 3

2021

Oil on gesso panel

28 3/8 by 28 3/8 in. 72 by 72 cm.

(MI&N 17356)

MITCHELL-INNES & NASH

ART BASEL MIAMI BEACH
NOVEMBER 30 - DECEMBER 4,
2021 BOOTH F5

ANTONIO HENRIQUE AMARAL GIDEON
APPAH SADIE BENNING SARAH BRAMAN
ALBERTO BURRI FELICIANO CENTURIÓN
CARROLL DUNHAM KELTIE FERRIS
GERASIMOS FLORATOS SAM FRANCIS KARL
HAENDEL GENERAL IDEA CHRIS JOHANSON
PAUL KLEE KIKI KOGELNIK ANNETTE
LEMIEUX EDDIE MARTINEZ TIONA
NEKKIA McCLODDEN HENRY MOORE POPE.L
JACOLBY SATTERWHITE JULIAN STANCZAK
AI WEIWEI PAUL WINSTANLEY