

MITCHELL-INNES & NASH

martha rosler: changing the subject... in the company of others

534 West 26th Street

December 8, 2022 – January 21, 2023



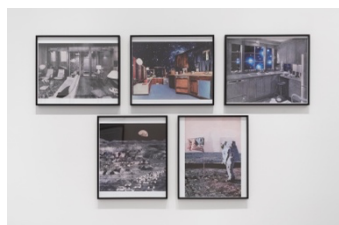
MARTHA ROSLER

North American Waitress, Coffee Shop Variety, 1976

Seven digital prints, ed. of five plus two AP

Each print: 20 by 16 in. 50.8 by 40.6 cm.

(MI&N 14726)



MARTHA ROSLER

House Beautiful: The Colonies, c. 1969-72

Full set of five photomontages

24 by 20 in. 61 by 50.8 cm. or 20 by 24 in. 61 by 50.8 cm.



MARTHA ROSLER

Three Cartoons, c. 1970

Pencil and pen on paper

Leaving Him:

image size: 2 3/4 by 15 in. 7 by 38 cm.

sheet size: 3 1/4 by 15 1/4 in. 8.3 by 38.7 cm.

Happy Home:

image size: 4 1/8 by 11 3/4 in. 10.5 by 30 cm.

sheet size: 4 7/8 by 12 1/8 in. 12.4 by 30.8 cm.

True Love:

image size: 5 1/8 by 12 in. 13 by 30.5 cm.

sheet size: 5 5/8 by 12 in. 14.3 by 30.5 cm.

(MI&N 9289)



MARTHA ROSLER

Body Beautiful, Beauty Knows No Pain, c. 1969-72

Full set of 31 photomontages and selection of original collages

Dimensions variable



MARTHA ROSLER

She Sees in Herself A New Woman Every Day, 1976

Installation comprising twelve colour photographs and one audio

recording (17 min. 21 sec.), edition 4 of 5 + 2AP

Each print: 16 by 20 in. 40.6 by 50.8 cm.

(MI&N 11777)

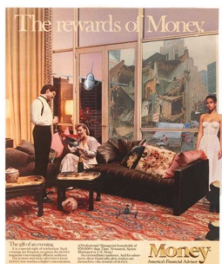
MITCHELL-INNES & NASH



MARTHA ROSLER
Objects With No Titles, c. 1971-73/2022
Clothing, fabric and batting
Site-specific installation
(MI&N 18126)



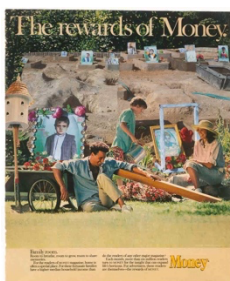
MARTHA ROSLER
Brunch à la Loft, from the series *The Rewards of Money*, c. 1987-88
Photomontage, ed. of ten plus two AP
24 by 20 in. 61 by 50.8 cm.
(MI&N 7269)



MARTHA ROSLER
The gift of an evening, from the series *The Rewards of Money*, c. 1987-88/2022
Photomontage, ed. of ten plus two AP
24 by 20 in. 61 by 50.8 cm.
(MI&N 18547)



MARTHA ROSLER
What's that bird, Daddy?, from the series *The Rewards of Money*, c. 1987-88/2022
Photomontage, ed. of ten plus two AP
24 by 20 in. 61 by 50.8 cm.
(MI&N 18546)



MARTHA ROSLER
Family room, from the series *The Rewards of Money*, c. 1987-88/2022
Photomontage, ed. of ten plus two AP
24 by 20 in. 61 by 50.8 cm.
(MI&N 18545)

MITCHELL-INNES & NASH



MARTHA ROSLER

A Gourmet Experience, 1974

Installation with banquet table, chairs, video, audio, and slide projections

Video includes, Martha Rosler, *Semiotics of the Kitchen*, 1975, RT: 6:33 min.

(MI&N 18532)



MARTHA ROSLER

Losing: A Conversation with the Parents, 1976

Two-page magazine spread with photos and text

Each panel: 23 1/4 by 17 1/4 in. 59.1 by 43.8 cm.

Installed: 23 1/4 by 34 1/2 in. 59.1 by 87.6 cm.

(MI&N 9529)



MARTHA ROSLER

Diaper Pattern, 1973

Installation with text on cloth diapers

138 by 110 in. 350.5 by 279.4 cm.

(MI&N 6120)



MARTHA ROSLER

B-52 in Baby's Tears, 1972

Plants, earth and wood

4 by 30 by 24 in. 10 by 76.2 by 61 cm.

(MI&N 18526)

Generali Foundation Collection—Permanent Loan to the Museum der Moderne Salzburg