



MITCHELL-INNES & NASH

ART BASEL 2023

HALL 2.0 | BOOTH F6

MITCHELL-INNES & NASH



Eddie Martinez, Buffy No. 23, 2023, Signed and dated "23", Oil, acrylic and spray paint on canvas, 144 by 108 in. 365.8 by 274.3 cm. (MI&N 18729)

MITCHELL-INNES & NASH



Eddie Martinez, Buffy No. 23, 2023, Signed and dated "23", Oil, acrylic and spray paint on canvas, 144 by 108 in. 365.8 by 274.3 cm. (MI&N 18729)

MITCHELL-INNES & NASH



Kiki Kogelnik, *Cold Passage*, 1964, Signed, titled and dated "64" on the reverse, Oil and acrylic on canvas, 59 3/4 by 48 in. 151.8 by 121.9 cm. (MI&N 14986)

MITCHELL-INNES & NASH



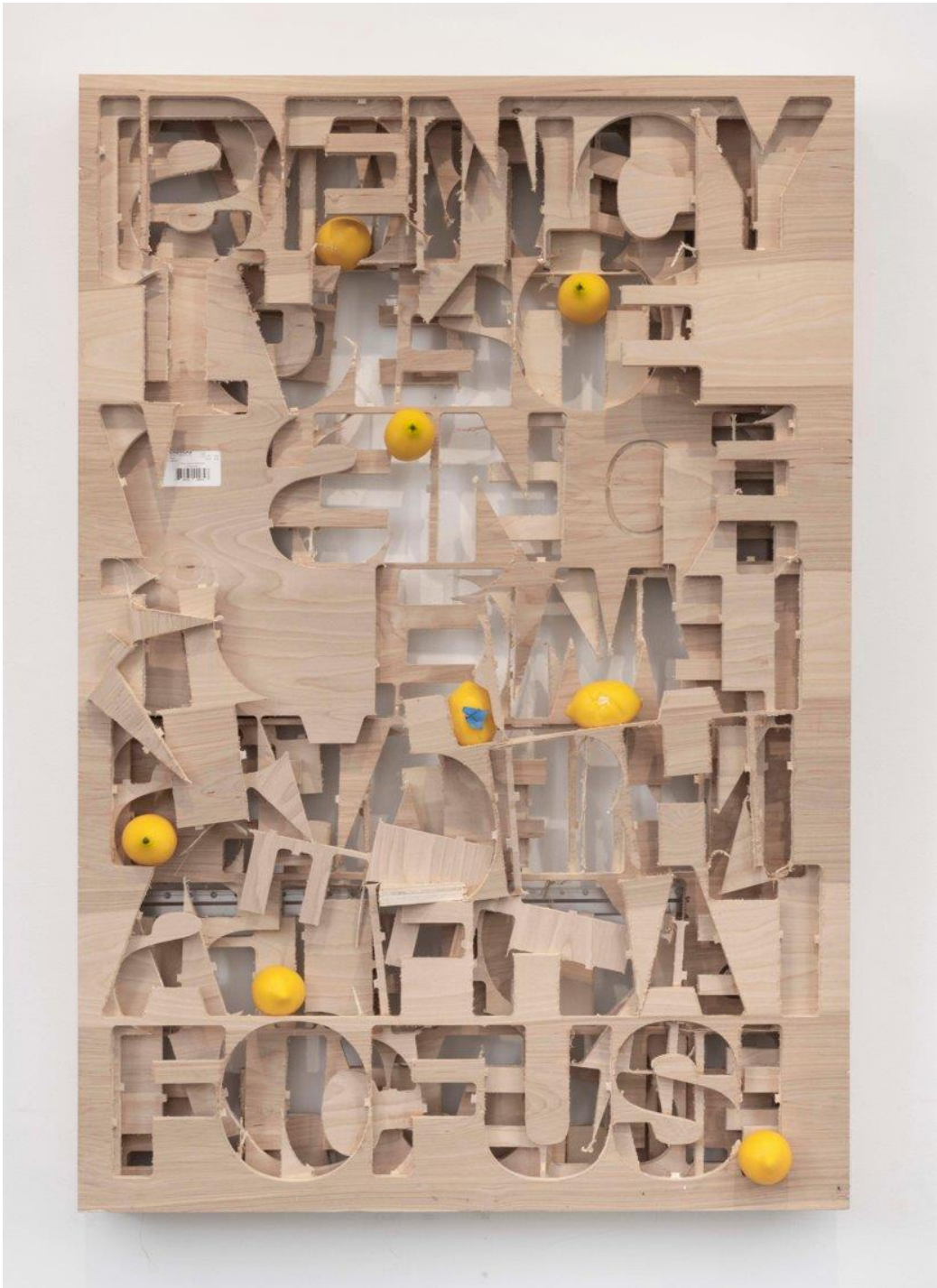
Rene Magritte, *Le Baiser*, 1962, Signed; titled and inscribed on the reverse, Oil on canvas, 21 3/4 by 18 1/8 in. 55.2 by 46 cm. (MI&N 18728)

MITCHELL-INNES & NASH



Scott Kahn, You Get What You Need, 1997, Signed and dated "97", Signed, titled and dated "1997" on the overlap, Oil on linen, 30 1/4 by 36 1/8 in. 76.8 by 91.8 cm. (MI&N 18726)

MITCHELL-INNES & NASH



Pope.L, 7 Lemons, 2023, Signed on the reverse, Plywood, plastic lemons, painter's tape, epoxy, labels and aluminum, 48 1/4 by 32 by 7 1/4 in. 122.6 by 81.3 by 18.4 cm. (MI&N 18723)

MITCHELL-INNES & NASH



Nancy Graves, *Loqua*, 1979, Signed, titled and dated "6-'79" on the reverse, Oil on canvas, 64 by 100 in. 162.6 by 254 cm. (MI&N 16711)

MITCHELL-INNES & NASH



Pope.L, Caraoke, 2021-22, Signed on the reverse, Acrylic, oil, charcoal, ink, graphite, ballpoint, painter's tape, foam, vinyl, push pins on canvases mounted to wooden support, 16 by 80 by 3 1/2 in. 40.6 by 203.2 by 8.9 cm. (MI&N 17792)

MITCHELL-INNES & NASH



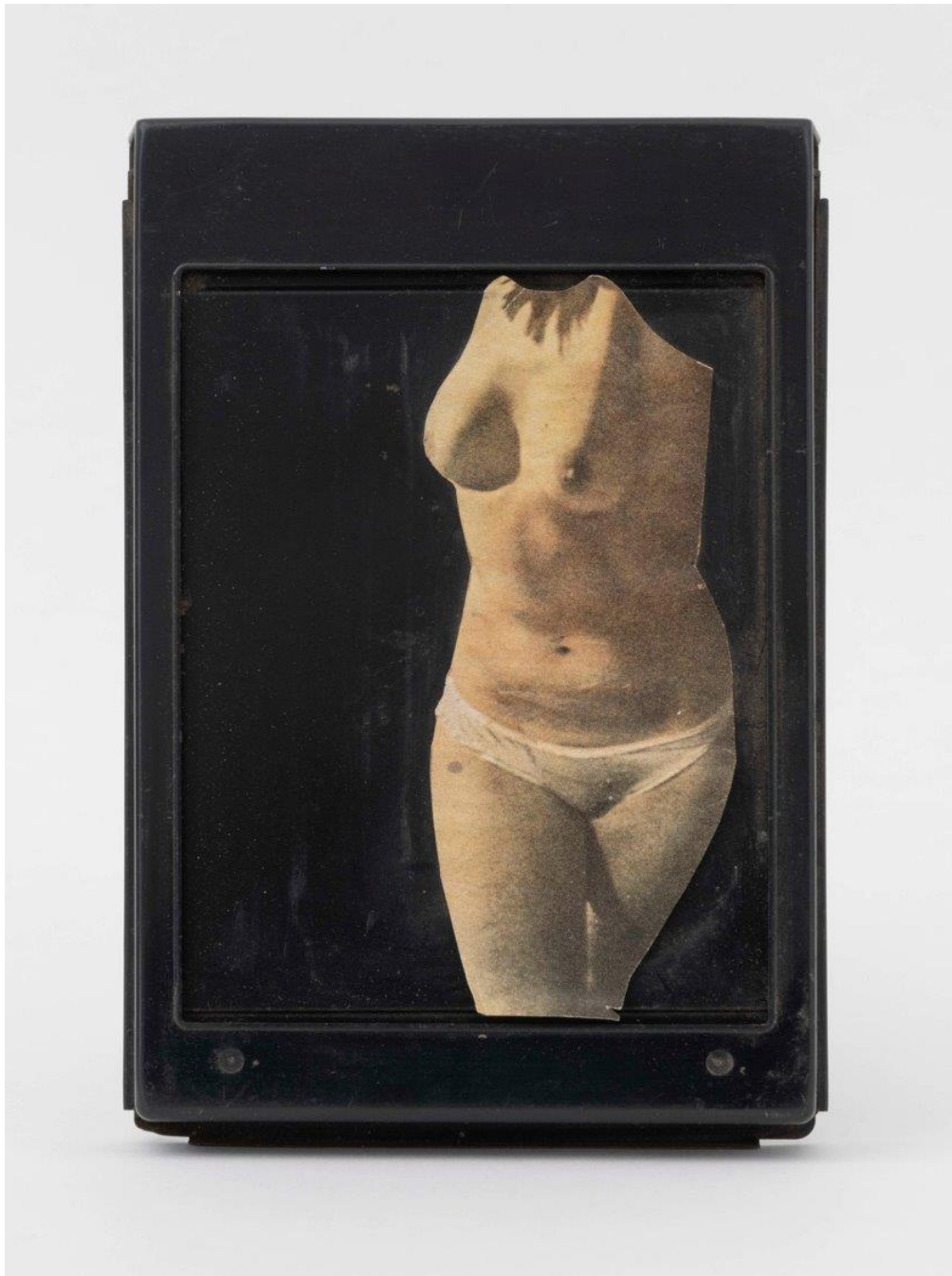
General Idea, AIDS (Reinhardt) #4, 1991, Signed, titled and dated "1991" on the reverse, Oil and beeswax on linen mounted on plywood, 60 by 60 in. 152.4 by 152.4 cm., Framed size: 64 1/2 by 64 1/2 by 2 3/4 in. 163.8 by 163.8 by 7 cm. (MI&N 18717)

MITCHELL-INNES & NASH



Lisa Yuskavage, *Frannie*, 1997, Signed, titled and dated "1997" on the reverse, Oil on canvas, 10 by 8 in. 25.4 by 20.3 cm. (MI&N 2564)

MITCHELL-INNES & NASH



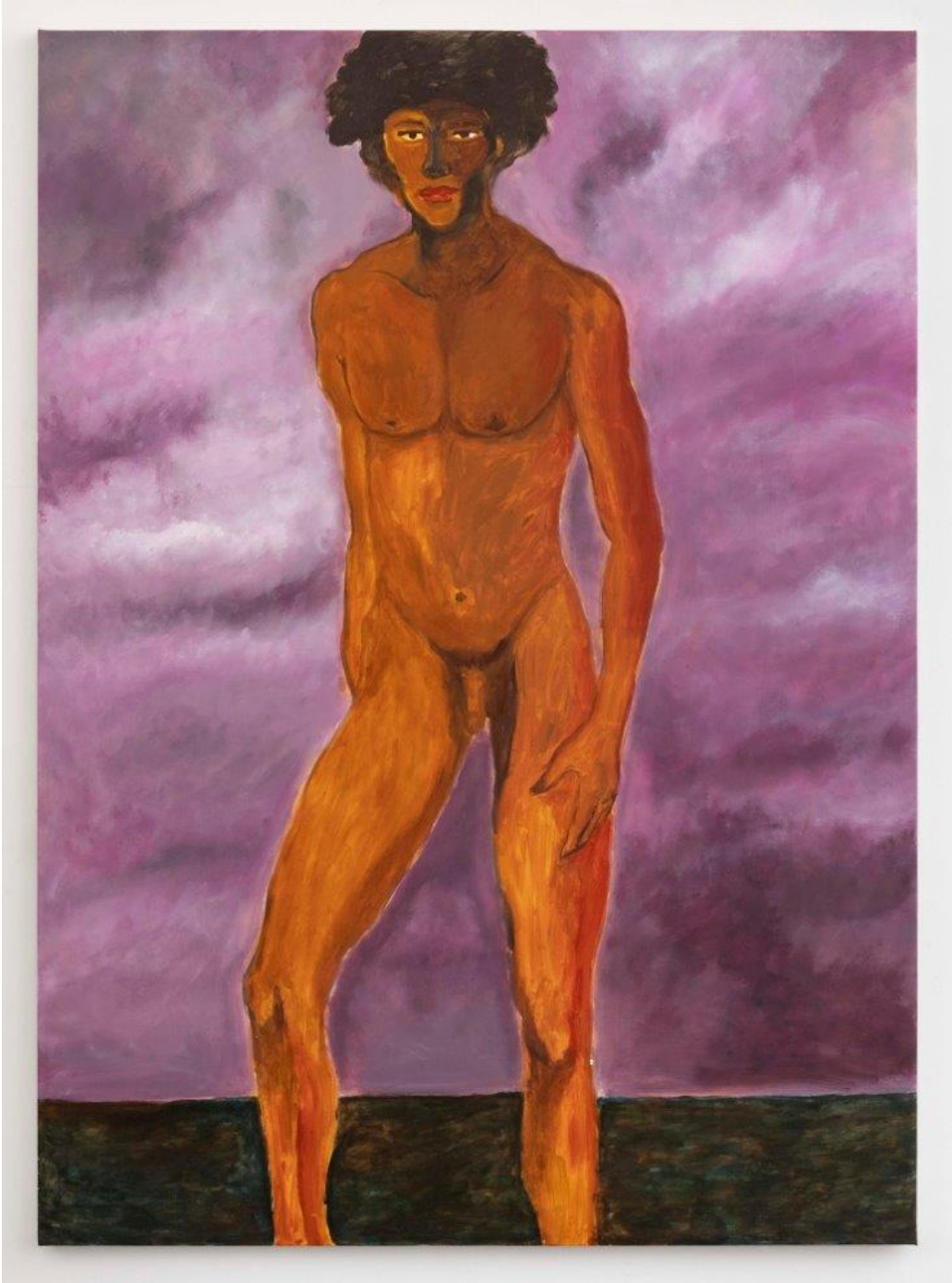
Martha Rosler, *Snapshot*, c. 1963-73, Collage on metal Polaroid film case, unique, 4 by 3 3/4 by 3/4 in. 10.2 by 9.5 by 1.9 cm. (MI&N 18713)

MITCHELL-INNES & NASH



Henry Moore, Mother and Child with Apple, 1956, Bronze with a dark brown patina, height: 29 5/8 in. 75.2 cm. (MI&N 18759)

MITCHELL-INNES & NASH



Gideon Appah, Nude Boy, 2021, Oil on canvas, 69 5/8 by 49 5/8 in. 176.8 by 126 cm. (MI&N 17393)

MITCHELL-INNES & NASH



Yirui Jia, Ensemble, 2023, Acrylic and glitter on canvas, 68 1/8 by 77 in. 1723 by 195.6 cm. (MI&N 18721)

MITCHELL-INNES & NASH



Yirui Jia, Ensemble, 2023, Acrylic and glitter on canvas, 68 1/8 by 77 in. 1723 by 195.6 cm. (MI&N 18721)

MITCHELL-INNES & NASH



Sarah Braman, Home, 2023, Oak and glass, 23 by 21 1/2 by 22 1/2 in. 58.4 by 54.6 by 57.1 cm. (MI&N 18724)

MITCHELL-INNES & NASH



Keltie Ferris, Limbo Garden, 2023, Signed and dated "2023" on the reverse, Oil and acrylic on canvas in the artist's frame, Framed size: 67 7/8 by 62 7/8 in. 172.4 by 159.7 cm. (MI&N 18730)

MITCHELL-INNES & NASH



Keltie Ferris, Limbo Garden, 2023, Signed and dated "2023" on the reverse, Oil and acrylic on canvas in the artist's frame, Framed size: 67 7/8 by 62 7/8 in. 172.4 by 159.7 cm. (MI&N 18730)

MITCHELL-INNES & NASH



Joanne Greenbaum, Untitled, 1994, Oil on canvas, 60 by 56 in. 152.4 by 142.2 cm. (MI&N 18440)